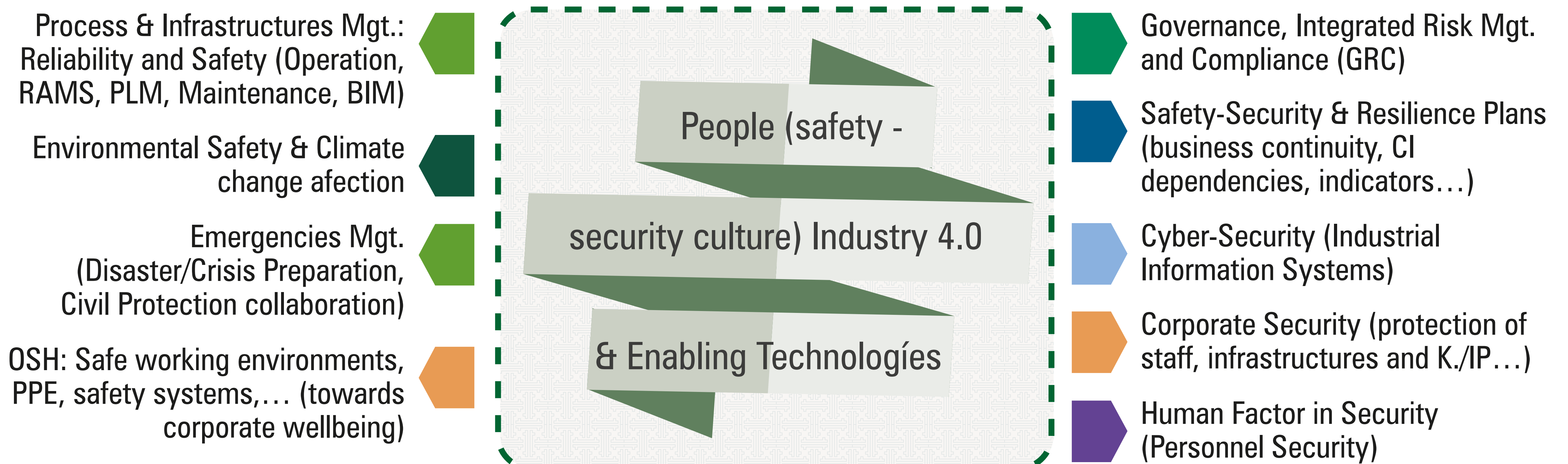
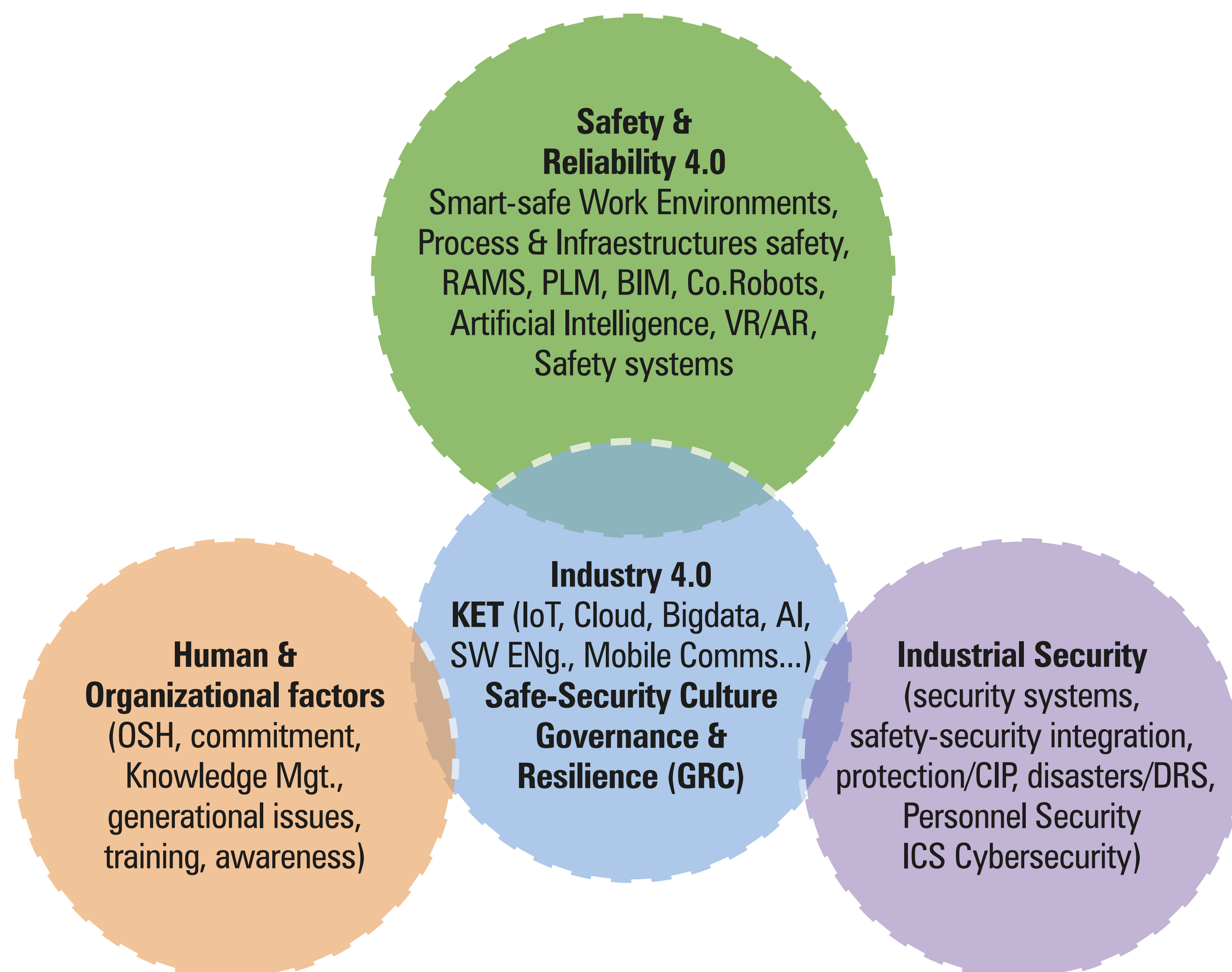


## NEW GOVERNANCE AND INTEGRATED RISK MANAGEMENT MODEL

### (RELIABILITY, SAFETY, SECURITY AND RESILIENCE UNDER INDUSTRY 4.0)



## ETPIS2: TECHNOLOGY INNOVATION CIRCLES



[www.pesi-seguridadindustrial.org](http://www.pesi-seguridadindustrial.org)