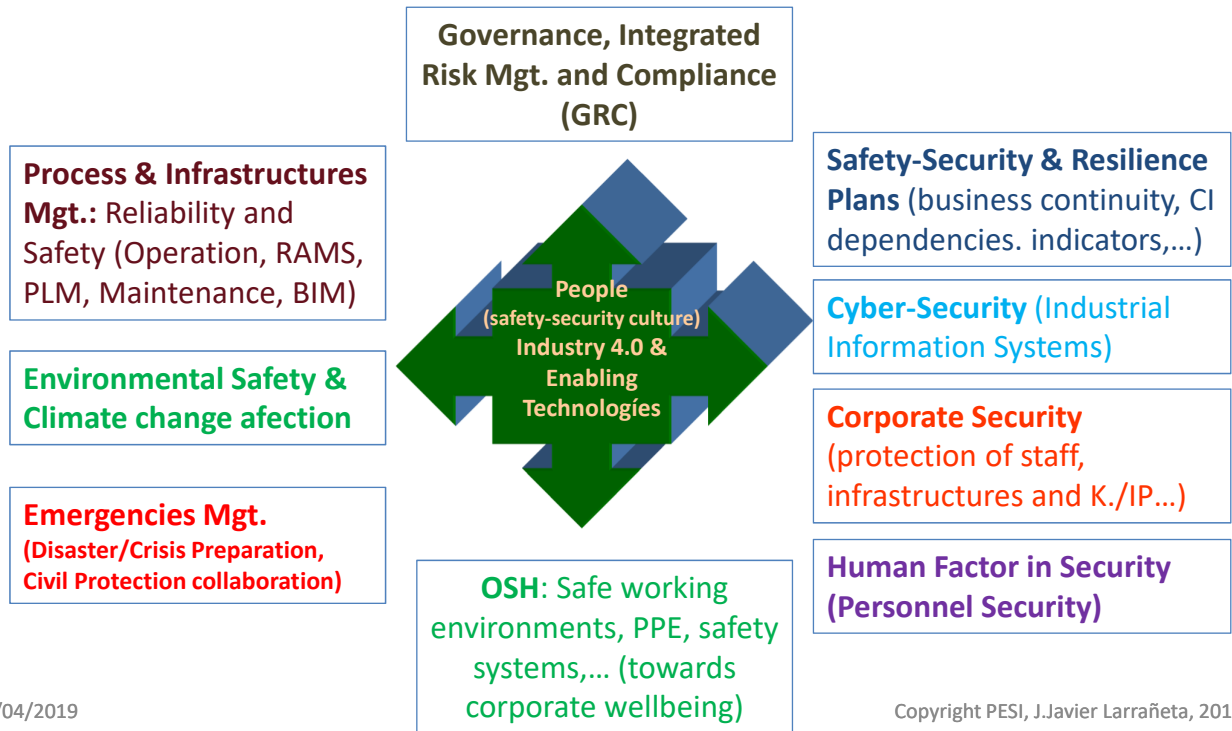
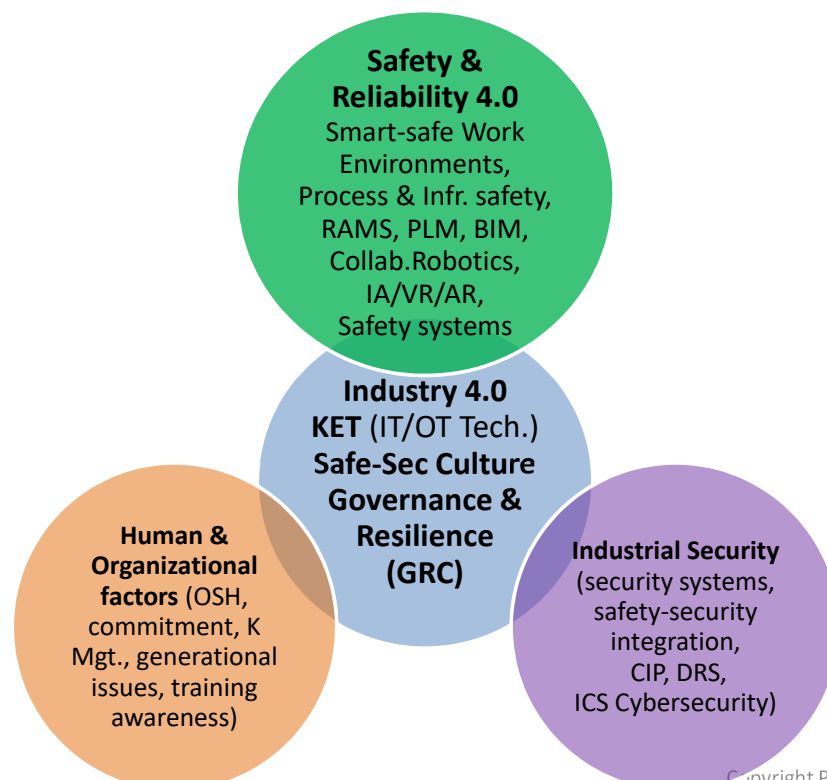


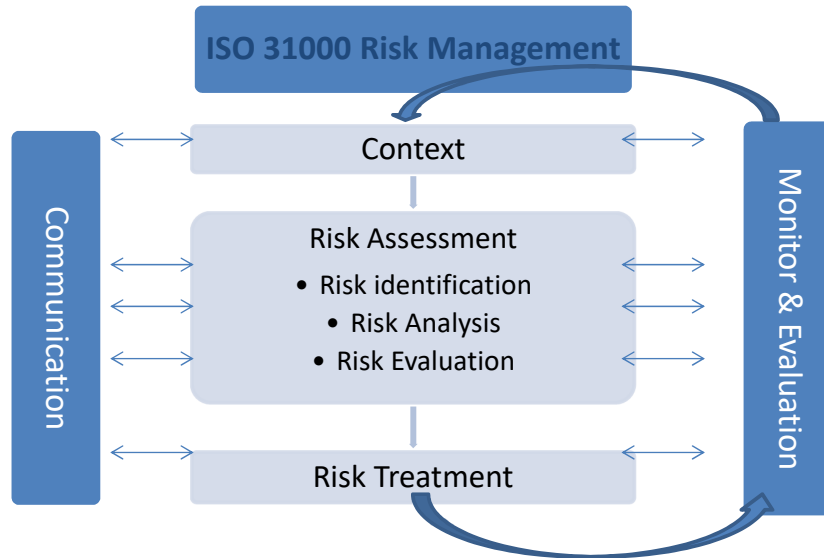
## New Governance and integrated Risk Management model (reliability, safety, security and resilience under Industry 4.0)



## ETPIS2: Technology Innovation Circles



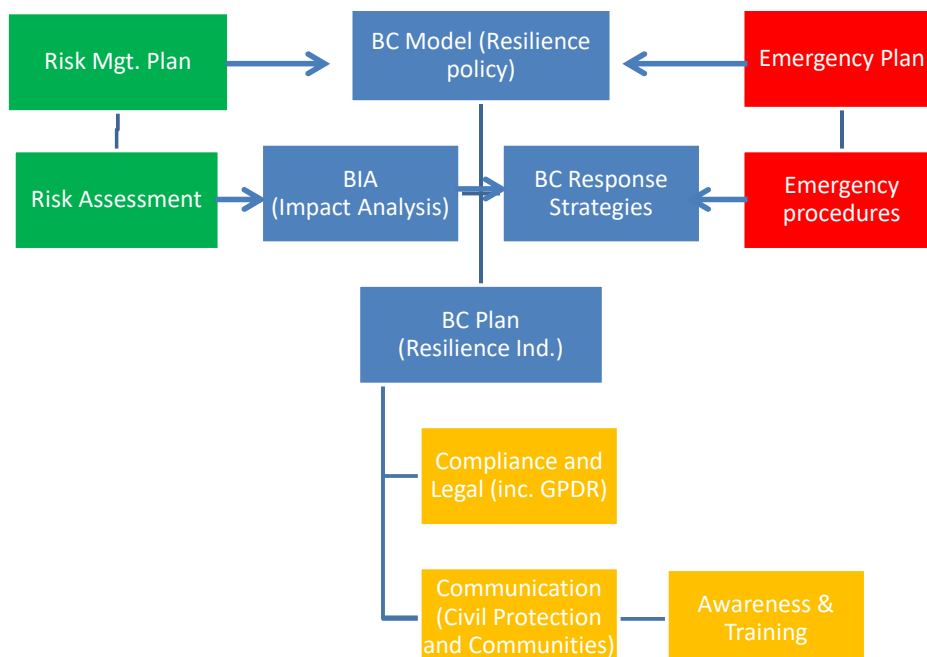
## RISK MANAGEMENT (generic ISO 31000)



24/04/2019

Copyright PESI, J.Javier Larrañeta, 2018

## Bussines Continuity, Risk and Crisis Management (integrated ISO models: 31000 – 223xx)



24/04/2019

Copyright PESI, J.Javier Larrañeta, 2018